

Floorplans



Riverside



CONTEMPORARY RIVERFRONT TOWNHOMES
PENTICTON, BC

FEBRUARY 2021



Fine finishes, modernist style.

Outside and in, you'll find thoroughly modern, premium creature comforts: Bosch appliances, ready options for rooftop hot tub and outdoor kitchen, plans that include a hybrid elevator for easy access to your four levels of living space, and a folding glass wall to keep you connected to the beauty right outside. Each plan is well-appointed with one of two designer colour and finishing schemes.

Riverside

Floor Plans

A choice of four thoughtful home layouts to suit your needs.

A

3-4 bedroom
rear dining,
middle kitchen

INDOOR
2291 sqft

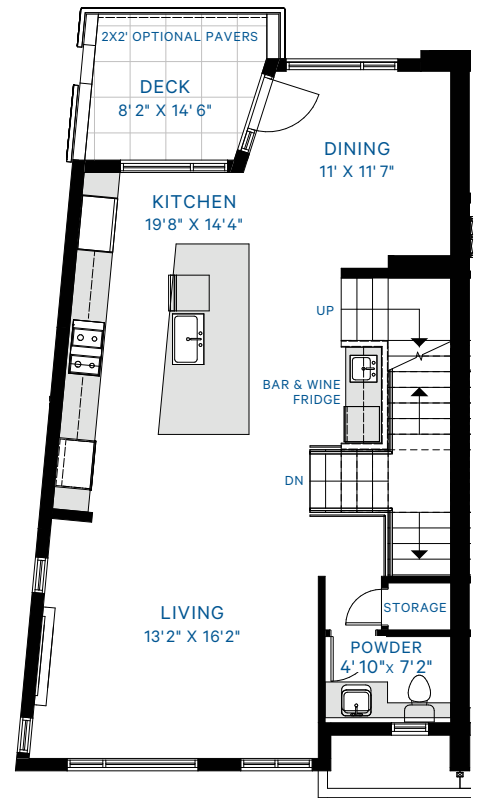
OUTDOOR
1084 sqft

TOTAL
3375 sqft

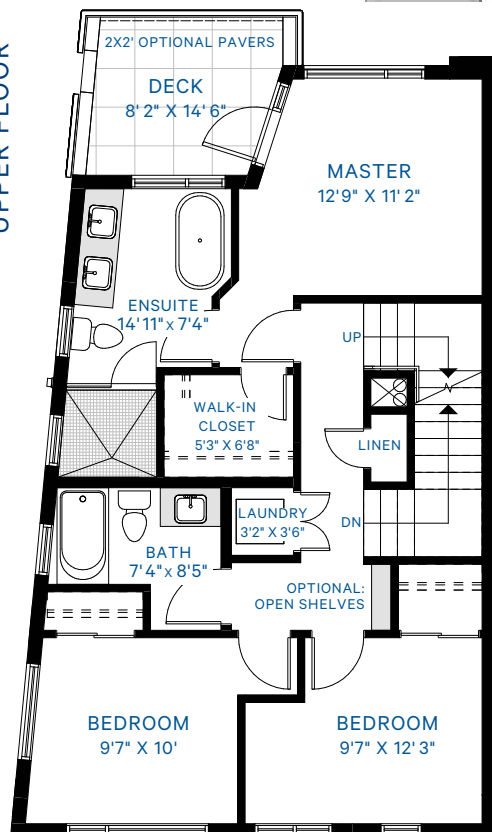
GROUND FLOOR



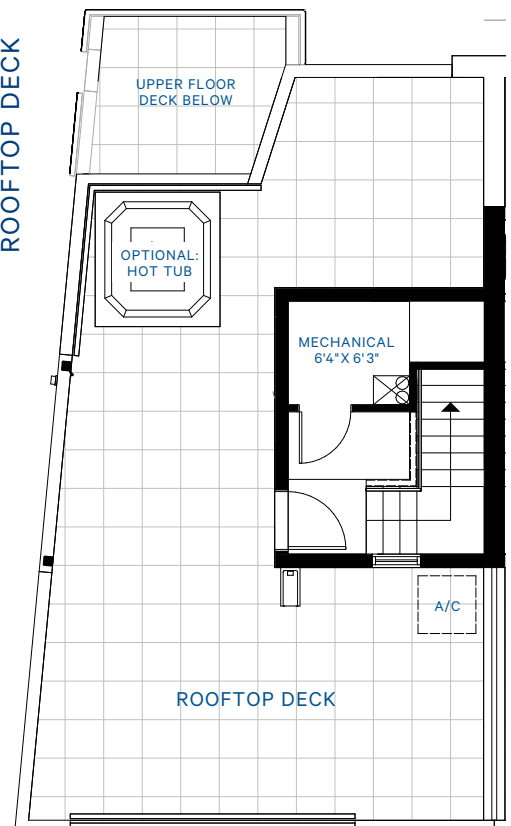
MAIN FLOOR



UPPER FLOOR



ROOFTOP DECK



B

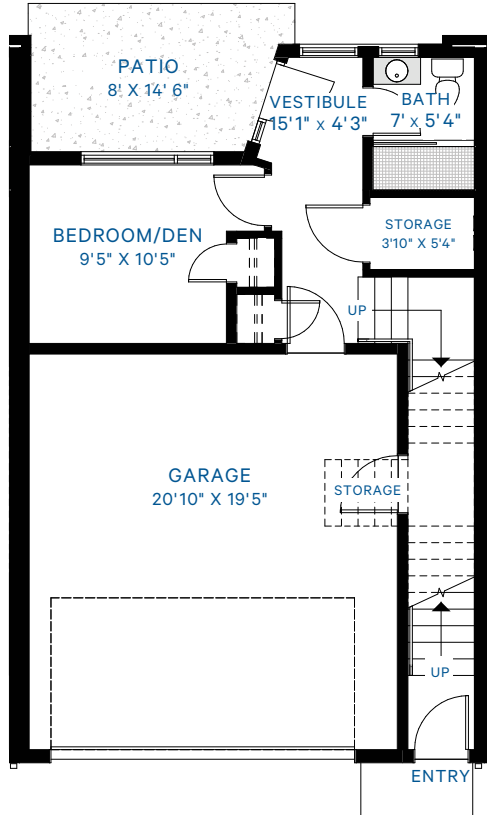
3-4 bedroom
rear dining,
front kitchen

INDOOR
2291 sqft

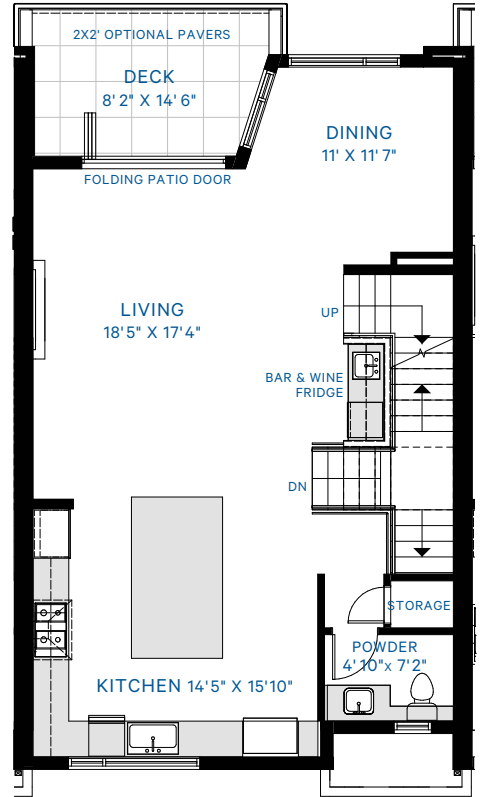
OUTDOOR
1084 sqft

TOTAL
3375 sqft

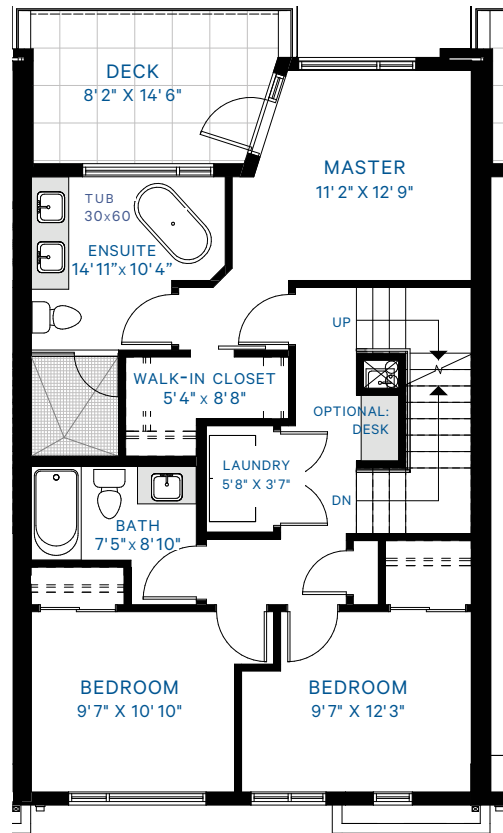
GROUND FLOOR



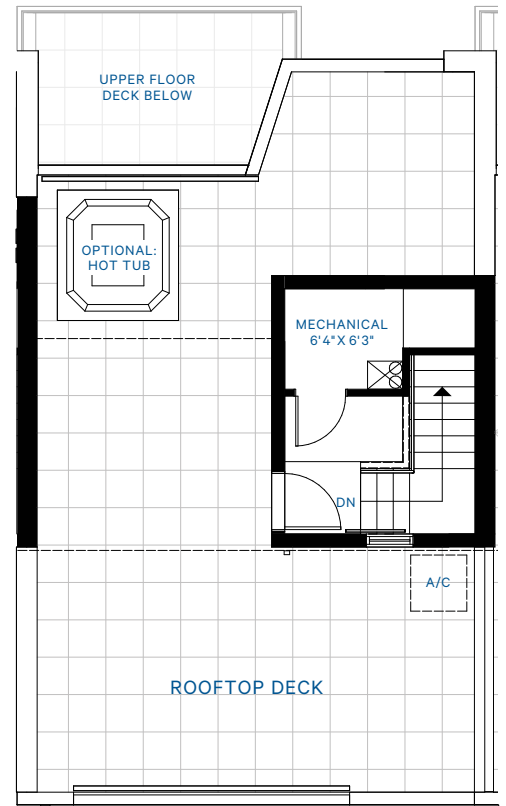
MAIN FLOOR



UPPER FLOOR



ROOFTOP DECK



D1

3-4 bedroom
middle dining,
front kitchen

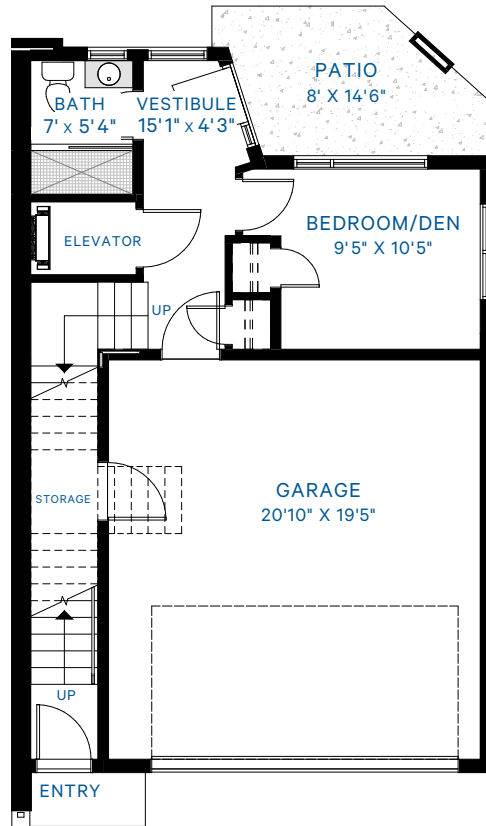
ELEVATOR

INDOOR
2318 sqft

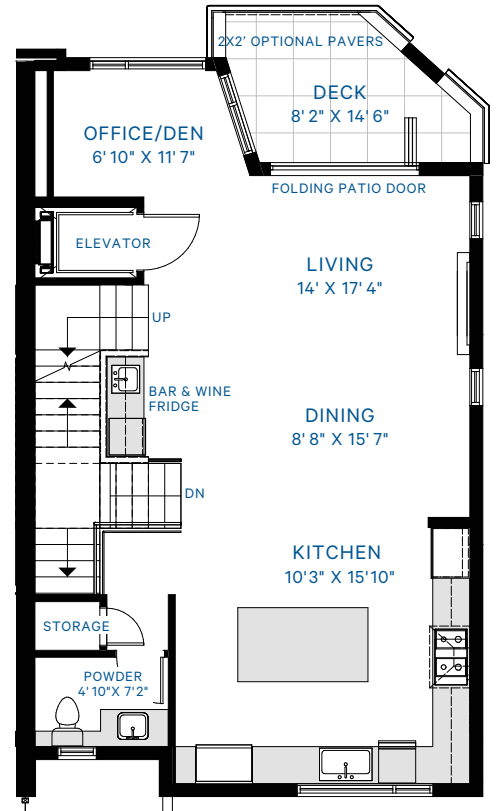
OUTDOOR
1084 sqft

TOTAL
3402 sqft

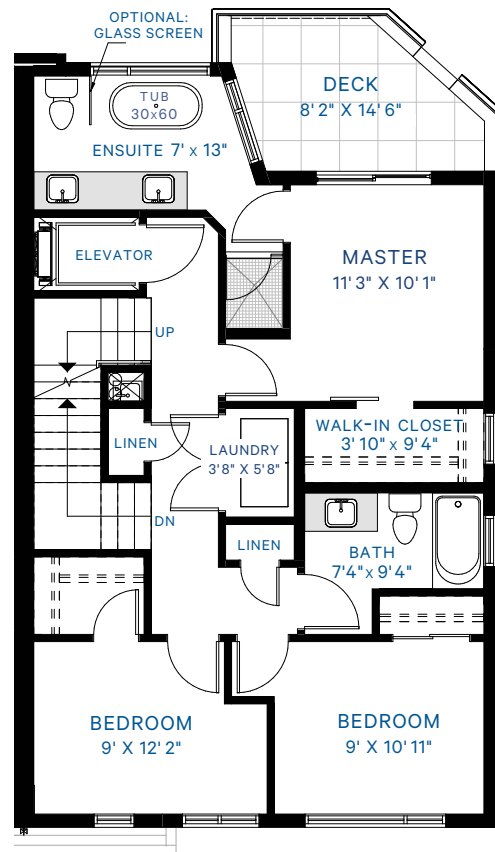
GROUND FLOOR



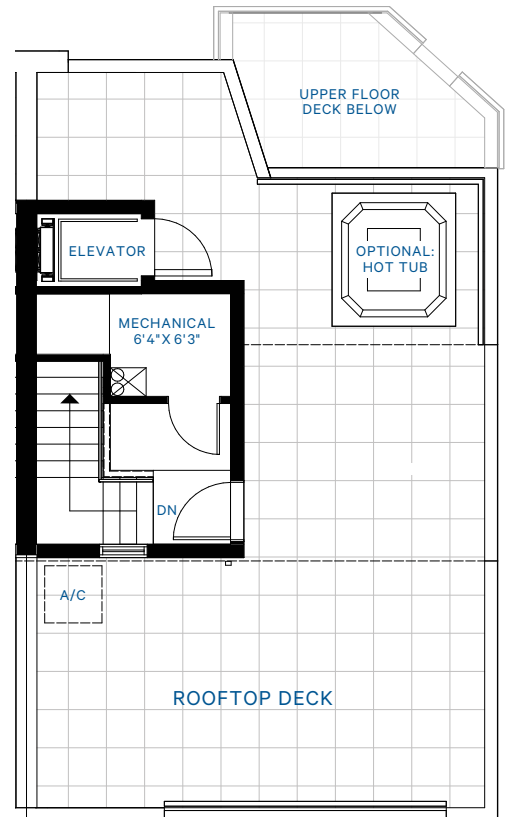
MAIN FLOOR



UPPER FLOOR



ROOFTOP DECK



D2

2-3 bedroom
double master,
middle dining,
front kitchen

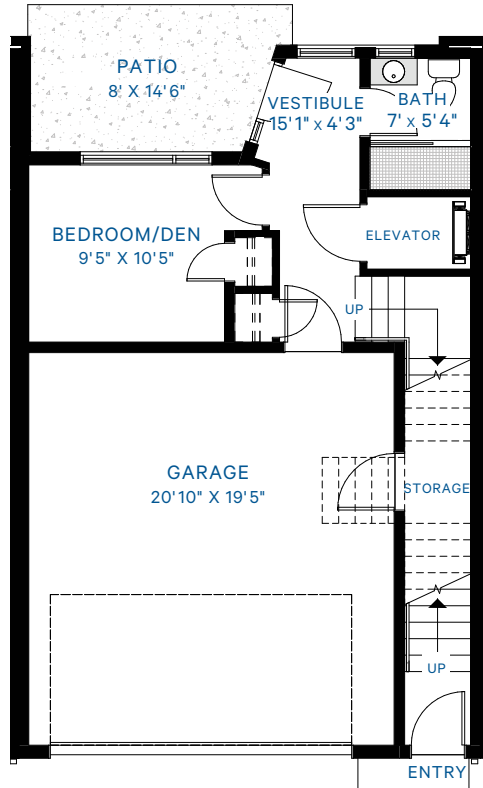
ELEVATOR

INDOOR
2318 sqft

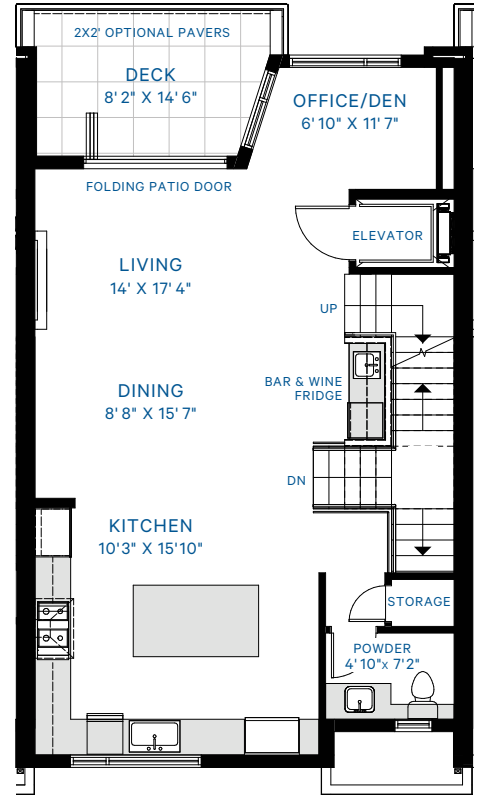
OUTDOOR
1084 sqft

TOTAL
3402 sqft

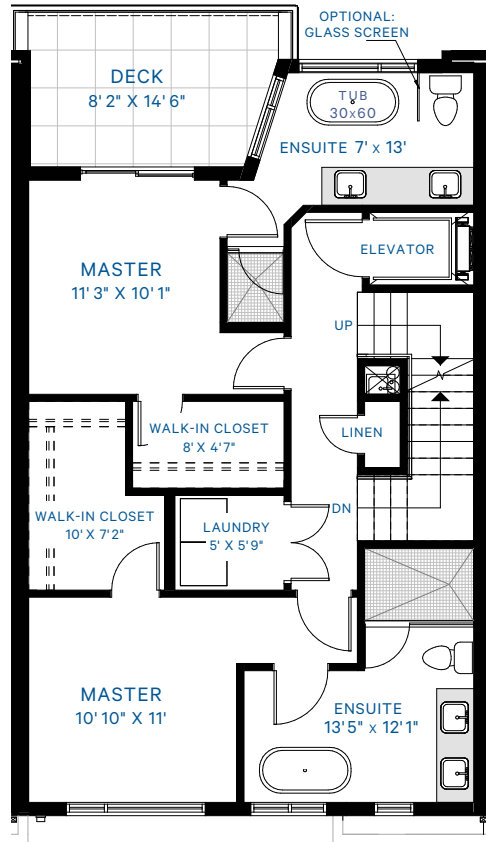
GROUND FLOOR



MAIN FLOOR



UPPER FLOOR



ROOFTOP DECK

